



Strengthening LEADER and CLLD in the new programming period within the NRPP

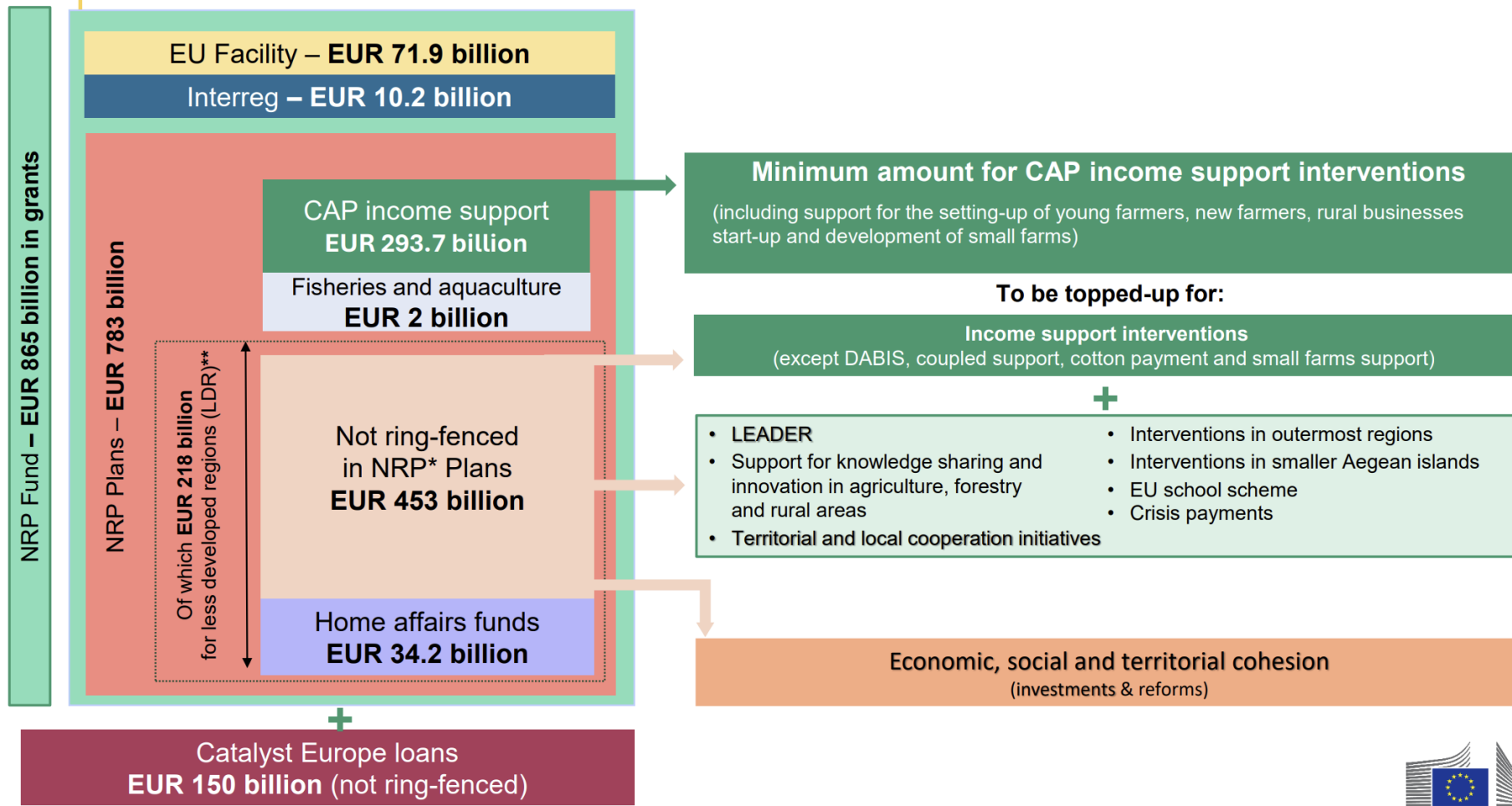
Piotr Sadłocha

ELARD and Polish Network of LAGs

RURAL PACT



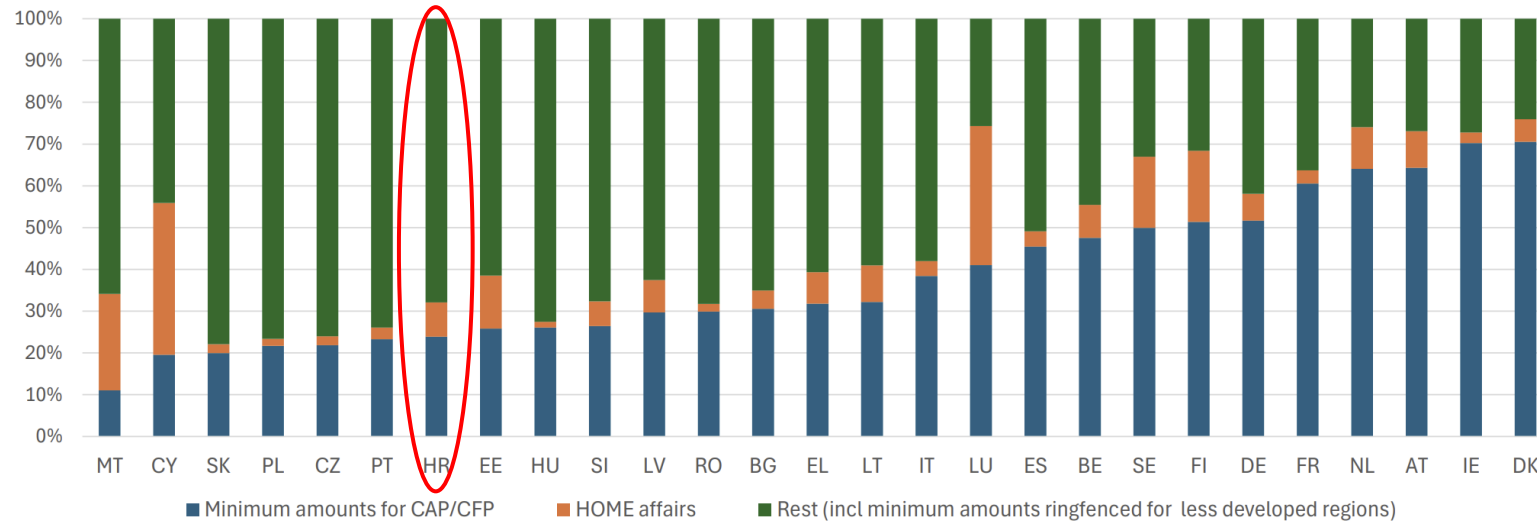
In current prices



** CAP and CFP interventions above the ringfenced amounts may be counted towards the earmarking for less developed regions provided they are for the benefit of those regions

Minimum amounts per MS for CAP/CFP

Share of minimum amounts for CAP/CFP within each MS' total grant allocation (excl. SCF and loans)



Commission:

MFF/NRP/CAP proposals 16 July 2025

Ringfenced amount EUR 293.7 billion for income support to farmers

Based on criticism from two co-legislators - 2 letters of Commission's President - Art 324 TFEU - to suggest further resources for farmers and rural communities



Rural target EUR 48.7 billion	Frontloading flexibility amount EUR 45 billion
<ul style="list-style-type: none">▶ A minimum of 10% to be dedicated to rural areas▶ MS may allocate this share to measures for agriculture▶ Could be increased by EUR 15 billion through the Catalyst Europe loans▶ + Regional check.	<ul style="list-style-type: none">▶ Part of flexibility amount (up to 2/3 of the amount available for the mid-term review) available as from 2028 for farmers and rural communities▶ The rest of the flexibility amount will remain usable as foreseen



Regional and
Urban Policy

EX POST EVALUATION
OF THE EUROPEAN REGIONAL
DEVELOPMENT FUND AND THE
COHESION FUND

2014
2020

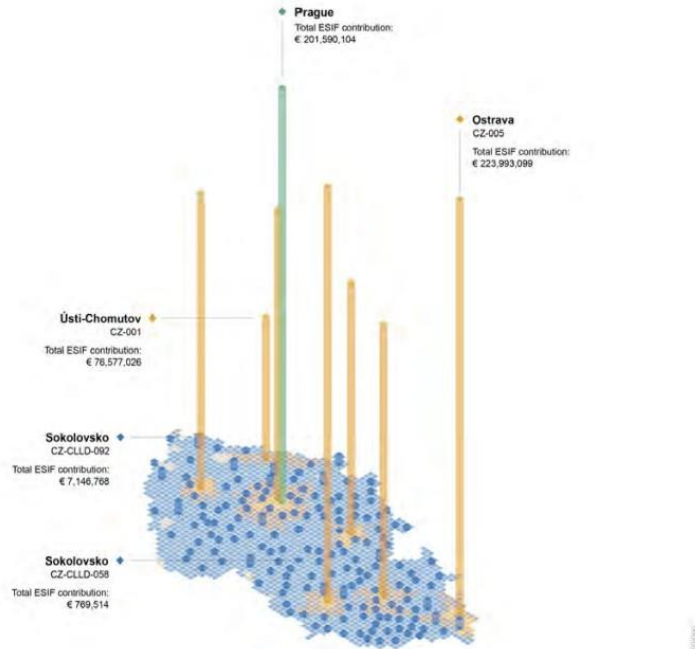
WORK PACKAGE 13
TERRITORIAL INSTRUMENTS
COUNTRY FICHES

RURAL PACT



COUNTRY FICHE | CZECHIA

Figure 1. Geographical distribution of Territorial Delivery Mechanism (TDM) strategies



SUD/ITI Prague - €201,589,104 – population 2.2 M – 91,63 €/inhab.

ITI Ostrava - €223,993,099 – population 0.996 M – 232,03 €/inhab.

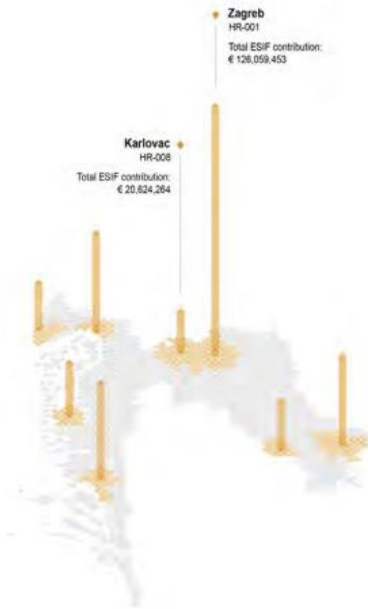
MAS Sokolovsko - €769,514 – population 0.089 M – 8,56 €/inhab.

MAS Slavkovske bojiste - €7,146,768 – population 0.089 M – 79,50 €/inhab.

CZ	Description	Legend	Scale
	Geographical distribution of strategies per type of TDM, with an indication of the amounts of the respective ESIF contributions. For each type of TDM, strategies with the highest and the lowest amounts of funding are indicated. Source: STRAT-Board (JIRC, n.d.). Note: There may be discrepancies between data from STRAT-Board and from other data bases.	<ul style="list-style-type: none"> Green hexagon = SUD (Art. 7) Operational Programme Orange hexagon = Integrated Territorial Investment (ITI) (SUD) Blue hexagon = Community-led Local Development (CLLD) 	

COUNTRY FICHE | CROATIA

Figure 1: Geographical distribution of Territorial Delivery Mechanism (TDM) strategies



ITI Zagreb – €126,059,453 – population 1.2 M – 105,05 €/inhab.

ITI Karlovac – €20,624,264 – population 0.055 M – 370,27 €/inhab.

HR

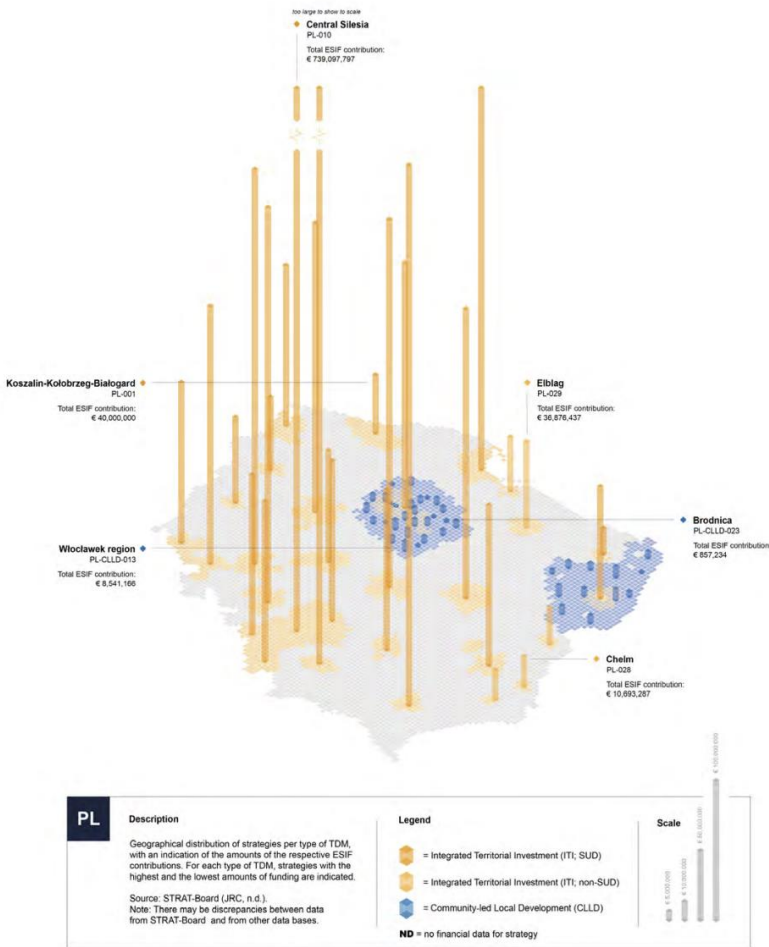
Description
Geographical distribution of strategies per type of TDM, with an indication of the amounts of the respective ESIF contributions. For each type of TDM, strategies with the highest and the lowest amounts of funding are indicated.
Source: STRAT-Board (JRC, n.d.)
Note: There may be discrepancies between data from STRAT-Board and from other data bases.

Legend
= Integrated Territorial Investment (ITI, SUD)

Scale
€ 0
€ 20,624,264
€ 126,059,453

COUNTRY FICHE | POLAND

Figure 1. Geographical distribution of Territorial Delivery Mechanism (TDM) strategies

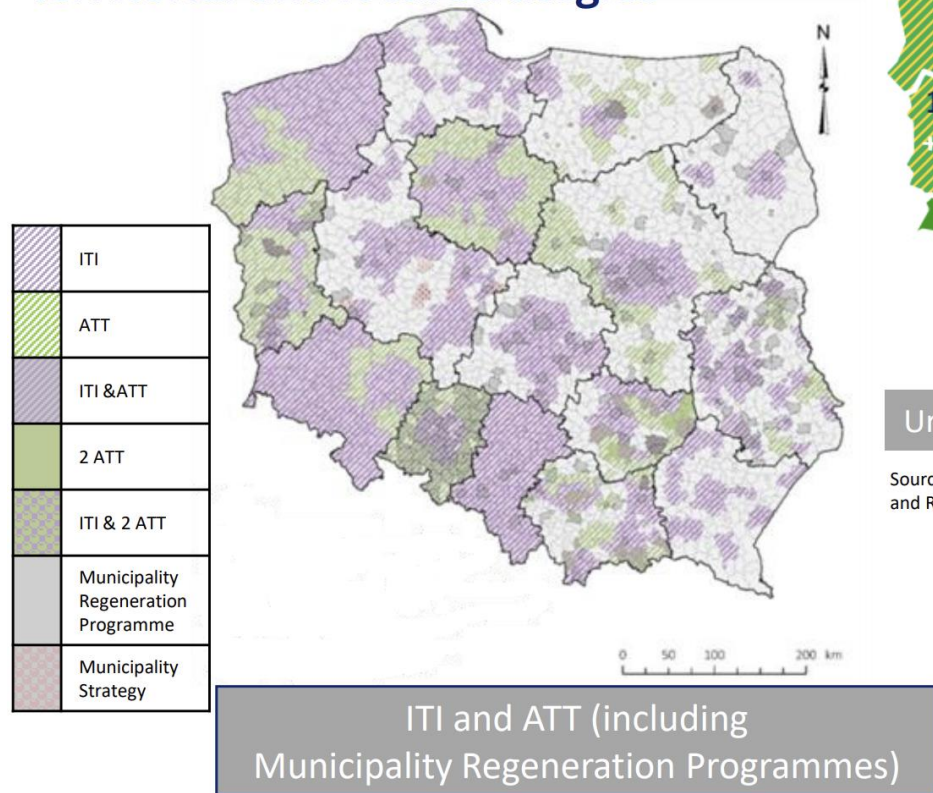


ITI Elbląg – € 36,876,437 – population 0.160 M – 230,47 €/inhab.

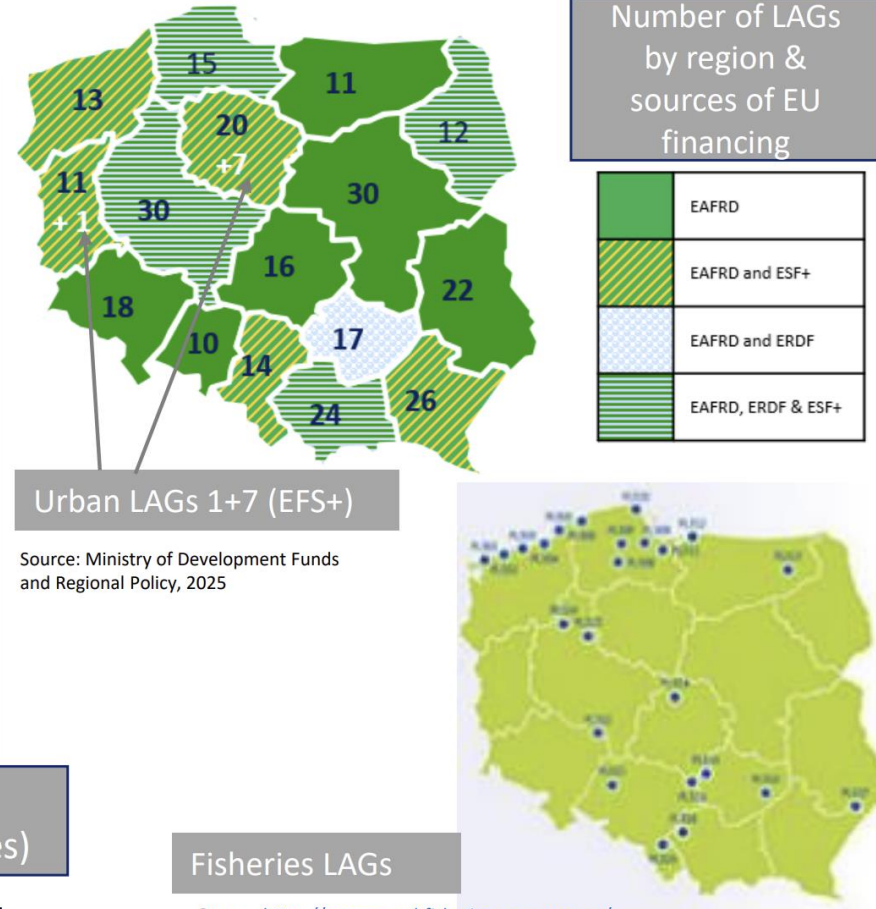
ITI Central Silesia – €739,097,797 – population 2.73 M – 270,73 €/inhab.

LGD Brodnica – €857,234 – Population 0.028 M – 30,39 €/inhab.

Competition among territorial and local strategies



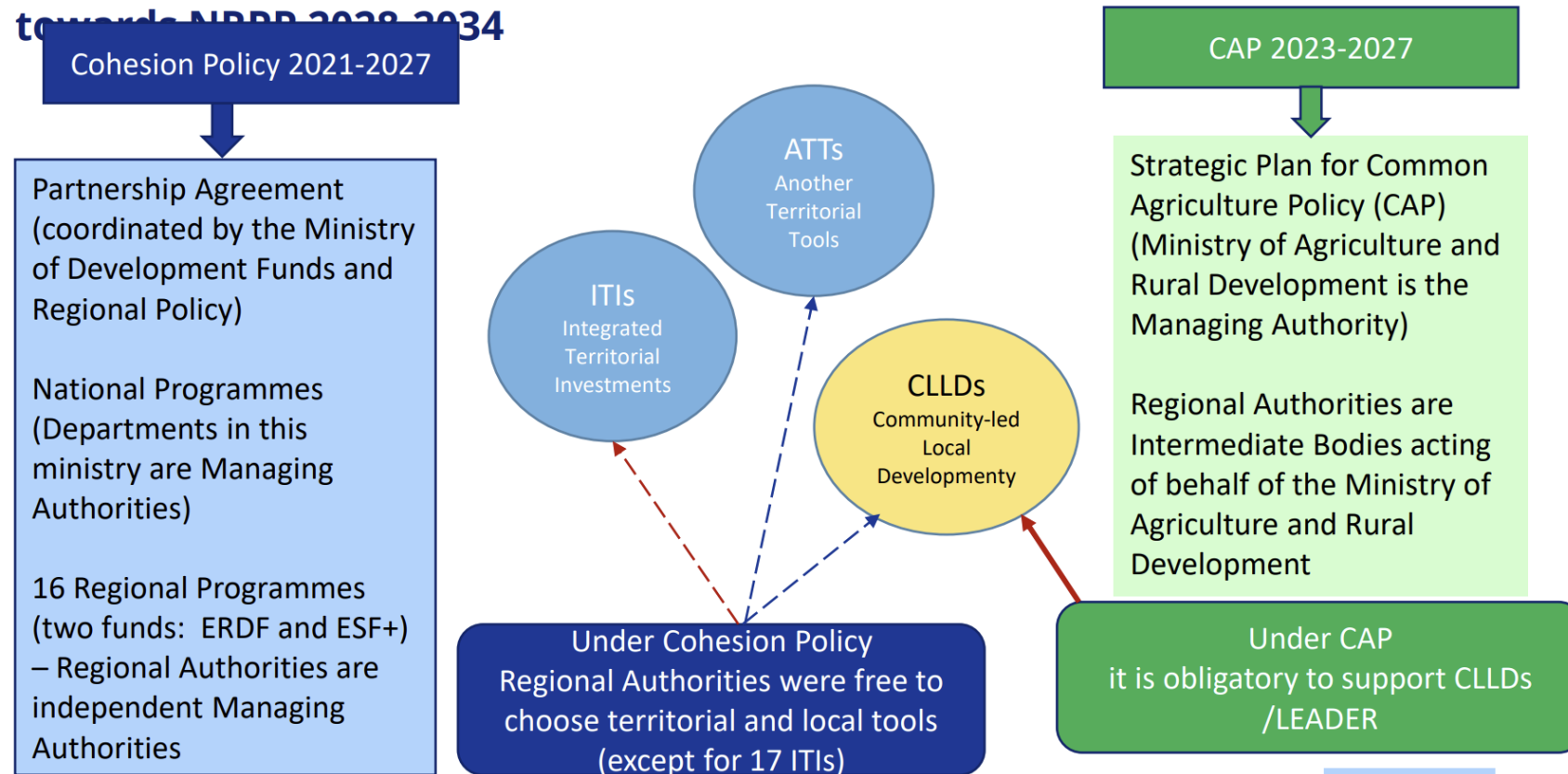
Source: Study "Evaluation of the application of Territorial Instruments ITI and ATT in the 2021-2027 perspective" Wolański for the Ministry of Development Funds and Regional Policy, 2025



Source: Ministry of Development Funds and Regional Policy, 2025

Source: https://oceans-and-fisheries.ec.europa.eu/publications/clld-factsheet-2021-2027-poland_en

Architecture of the UE Funds in Poland 2021-2027 implies country position towards NRRP 2022-2034



Competition among territorial and local strategies

Integrated Territorial Investments (ITI)	95	Chosen to support in all 16 regions (except 17 obligatory ITI in functional areas around regional capital cities)
Another Territorial Tools (ATTs)	458	Regeneration of disadvantaged areas supported in 13 out of 16 regions, number of Municipality Regeneration Programmes is increasing year by year
Another Territorial Tools	57	A variety of types, depending on region (other than regeneration of disadvantaged areas)
LAGs	297	182 multi-fund (EAFRD and ESF+ and/or ERDF) 107 supported only by EAFRD 8 urban LAGs (only EFS+)
FLAGs	24	Fisheries LAGs are acting independently from LAGs supported by EAFRD, ERDF and EFS+, they may overlap with non-fisheries LAGs in terms of covered territory



Article 174 Treaty on the Functioning of the European Union

In order to promote its overall harmonious development, the Union shall develop and pursue its actions leading to the strengthening of its economic, social and territorial cohesion.

In particular, the Union shall aim at reducing disparities between the levels of development of the various regions and the backwardness of the least favoured regions.

Among the regions concerned, particular attention shall be paid to rural areas, areas affected by industrial transition, and regions which suffer from severe and permanent natural or demographic handicaps such as the northernmost regions with very low population density and island, cross-border and mountain regions.

RURAL PACT



The main ELARD advocacy points:

- 30% of NRPP for Rural Target and 30% of Rural Target for LEADER-CLLD, Smart Villages and others bottom-up approaches,
- Clarify the relationship between CLLD and LEADER,
- Guarantee LEADER-CLLD as obligatory tools across cohesion, social and maritime policies.





Thank you

Piotr Sadlocha

**[https://elard.eu/positions/
piotr.sadlocha@elard.eu](https://elard.eu/positions/piotr.sadlocha@elard.eu)**



RURAL PACT

